

Appropriate  
Body Service  
aligned to the  
new Early Career  
Framework  
(ECF)



# Appropriate Body Service

Professional support to help schools fulfill the responsibilities set out in the early career framework induction for early career teachers and tutors.

- ✓ Support to understand roles and responsibilities and to implement an early career framework induction.
- ✓ Registration and inclusion on the Teaching Regulation Agency (TRA) early career teacher database.
- ✓ An online management tool that enables you to access and complete the assessment requirements with ease.
- ✓ Receipt, processing, monitoring and quality assurance of assessment forms.
- ✓ A dedicated helpline, named contact and email contact for induction coordinators, tutors and ECTs.
- ✓ Final decision on whether the early career teacher has made satisfactory progress against the Teachers' Standards.

To find out more about our services please call  
**0333 300 1900** or email [nqts@entrust-ed.co.uk](mailto:nqts@entrust-ed.co.uk)  
[www.entrust-ed.co.uk](http://www.entrust-ed.co.uk)

 Entrust Education Improvement  @entrustEDU

**entrust**  
Inspiring Futures



**Did you know?**  
ECTs must be registered with an appropriate body before they start their induction.

# Appropriate Body Service

Entrust offers a comprehensive service for supporting early career teachers throughout their induction process as the appropriate body.

## Our support offer includes:

- ✓ Registration and inclusion on the Teaching Regulation Agency (TRA) early career teacher database.
- ✓ An all-encompassing handbook for early career teachers and tutors.
- ✓ Receipt, processing, monitoring and quality assurance of assessment forms.
- ✓ Dedicated helpline, named contact and email contact for induction tutors and ECTs.
- ✓ Fidelity checks, monitoring and quality assurance of the induction programme.
- ✓ Confidential advice and guidance from knowledgeable and experienced consultants.
- ✓ Final decision on whether the early career teacher has made satisfactory progress against the Teachers' Standards, based on the headteacher's/principal's recommendations.
- ✓ Training for both the tutor and the early career teacher to ensure understanding of the new statutory induction guidance and roles and responsibilities.
- ✓ Notification of completion of ECT induction to the TRA.
- ✓ Guidance for induction coordinators and tutors.

# Appropriate Body Service

## Online Management Tool



To enhance your management of the early career teacher induction process, we include in our offer a nationally recognised online system which will enable you to access and complete the assessment requirements quickly and easily.

### System benefits:

- ✓ Quick and easy access to view information about your ECT's induction year, for example when their next assessment is due, when they are due to finish, as well as view previous assessments you have completed.
- ✓ Part time early career teachers' assessment due dates are automatically calculated, and assessments added to the system at the correct dates.
- ✓ Automated reminders when assessments are due for completing online.
- ✓ Secure online submission of assessments.
- ✓ ECTs' and tutors' details can be quickly and easily updated.
- ✓ Automatic TRA employer access check during registration to ensure that early career teachers have QTS
- ✓ Easy access to materials to support the induction process.
- ✓ Everything stored permanently online for you – no need for printing or posting of assessments and registration forms.
- ✓ Online, so it's accessible anywhere anytime, making it easy to save your work and come back to it later.
- ✓ Secure, encrypted, password protected system, backed up regularly so all of your data is safe.
- ✓ Technical help readily available, both through an online helpdesk and telephone support.

## REGISTER TODAY

Register your ECT with the Entrust Appropriate Body Service in two simple steps:

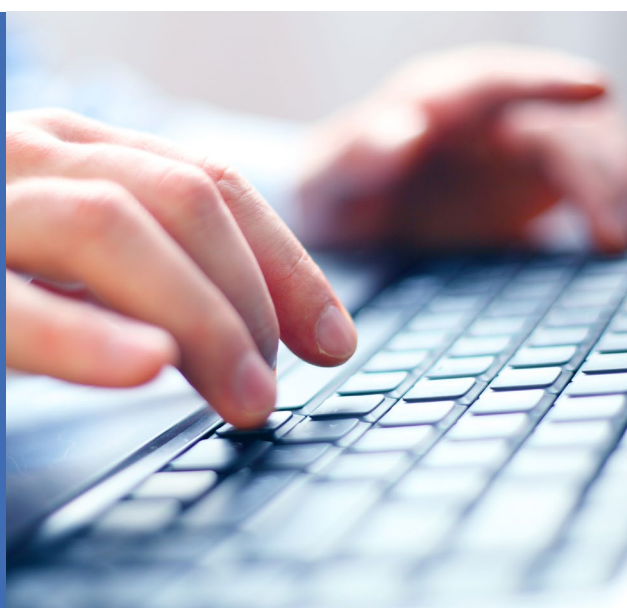
1. Purchase the appropriate body service on **SLA Online**
2. Register your ECT(s) on our **online management tool**

£250 per early career teacher for the academic year.

We welcome registrations from non-Staffordshire locations. Please contact the Entrust Appropriate Body Service with the contact details for your area.

### Get in touch

Email [nqts@entrust-ed.co.uk](mailto:nqts@entrust-ed.co.uk)  
or telephone **0333 300 1900**



A photograph of a female teacher with long blonde hair and glasses, wearing a green sweater and a blue lanyard, leaning over a desk to look at a book with a young male student in a dark suit. They are both smiling. The background is a classroom setting with a whiteboard and other students. The entire image is overlaid with a semi-transparent blue filter.

## CONTACT US

To find out more about how we can help  
please call **0333 300 1900** or  
email **[nqts@entrust-ed.co.uk](mailto:nqts@entrust-ed.co.uk)**

**[www.entrust-ed.co.uk](http://www.entrust-ed.co.uk)**

**entrust**  
Inspiring Futures